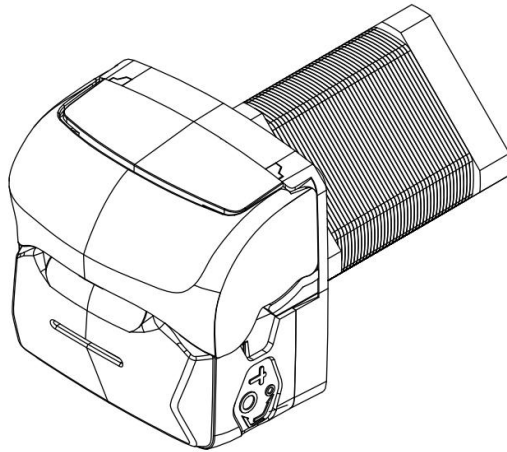


Precision Pump Manual of OEM-KTB001





Note:

- Please read the manual carefully before operating the product.



Warning:

- Tubing may have crack due to wear. It results in the overflow of fluid from tubing. In that time human body and instruments may be harmed. So users must check frequently and change tubing in time. Please replace the tubes for the dual channel pump head, the dual channel must change in the same time.
- Connect the power cord to the wall socket directly, and avoid using the extended electric wire.
- If the power cord or plug had wear and other damage, please disconnect the plug. (Hold the plug instead of the wire)
- If following situations happened, please turn off the power supply and disconnect the plug. (Hold the plug instead of the wire)
 1. Fluid splash on the pump.
 2. You think the pump need to maintain or repair.
- The user's power socket must have ground wire, and have reliable grounding.

Catalogue

1. Product Introduction	- 1 -
2. Product Interface Definition	- 1 -
3. Technical Specification	- 2 -
4. Main Functions and Features	- 2 -
5. Pump Head Instruction	- 2 -
6. Dimension Drawing	- 3 -
7. Maintenance	- 4 -
8. Warranty and After Sales Service	- 4 -

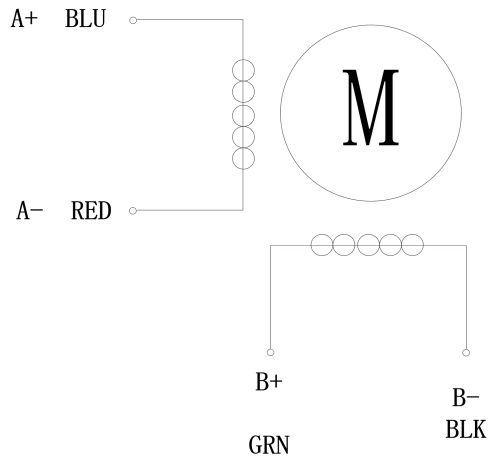
1. Product Introduction

Driven by stepper motor.

Suitable pump head: Flip type pump head of KT15 series.

2. Product Interface Definition

Motor connection	
Wiring color	Definition
Blue	A+
Red	A-
Green	B+
Black	B-



3. Technical Specification

Stepping range angle	1.8°
Phase	2
Phase current	1.7A
Phase voltage	3.6V
Recommended speed range	0.1-600rpm (≤ 400 rpm, continuous work; 400-600rpm, intermittent work)
Temperature	0-40°C
Humidity	$\leq 80\%$ RH no condensation
Cooling way	Recommended air cooling
Working environment	Keep away from heating device, avoid dust, oil, corrosion gas and strong vibration site.

4. Main Functions and Features

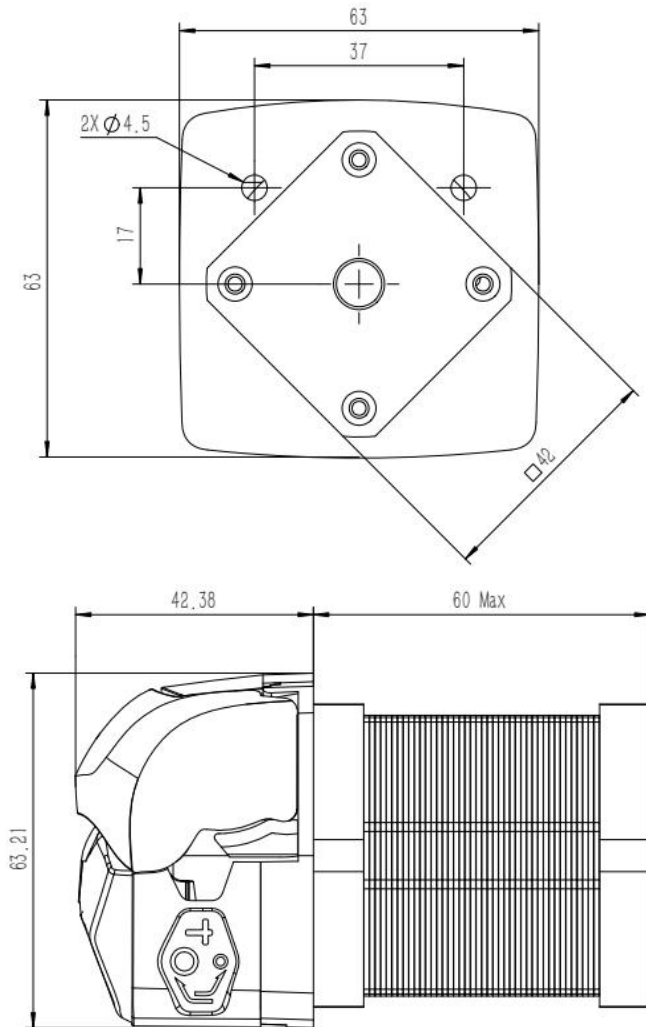
- 4.1 Simple to operation.
- 4.2 Driven by stepper motor.

5. Pump Head Instruction

For details, please refer to <<Shenchen Pump Head Instruction Manual>>.

6. Dimension Drawing

(Unit:mm)



7. Maintenance

- When pump does not work, please loose the upper block of pressing the tubing for avoiding changing the shape of tubing because of longtime extrusion.
- Keep the rollers of pump head clean and dry, otherwise it can quicken the tubing wear, reduce the useful life of tubing and lead the rollers to damage in earlier.
- Pump head cannot resist organic solvent and super corrosive liquid. Please pay attention to it when using.
- The stepping motor generates high heat, it is recommended to air-cool it.

8. Warranty and After Sales Service

We support 1 year warranty for the pumps, subject to the exceptions below. Our company shall not be liable for any loss, damage, or expense directly or indirectly related to or arising out of the use of its products. This warranty does not obligate our company to bear any costs of removal, installation, transportation, or other charges which may arise in connection with a warranty claim.

If the pump fails during the warranty period, after confirmation by our technical department, we will provide spare parts free of charge. Customers will need to bear the shipping cost.

Exceptions:

- The warranty shall not apply to repairs or service necessitated by normal wear and tear or for lack of reasonable and proper maintenance.
- All tubing and pumping accessories as consumable items are excluded.
- Electrical surge as a cause of failure is excluded.
- Chemical attack is excluded.
- Improper operation or man-made damage as a cause of failure is excluded.

